

STONE SAWS

Automatic bench saw TFR A

Motorized stone saw for large slabs

TFR-A is born from the **specific needs of our customers**. This motorized bridge saw combines the **essentiality** of a basic saw with the **sturdiness** of a massive frame allowing to feature **pop-up rollers** on the worktable for **easy slab positioning**.



Features



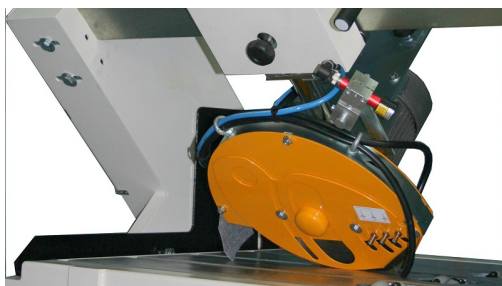
STRUCTURE

Steel frame, sandblasted and painted with epoxy-powder finish (hot-dip galvanized upon request).



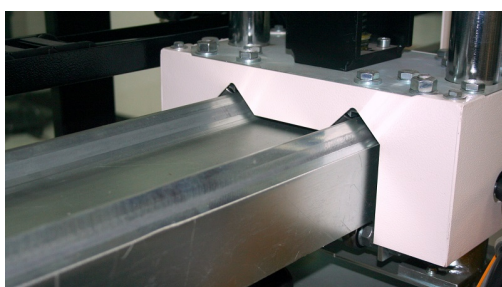
CUTTING DEPTH ADJUSTMENT

Motorized working depth adjustment along Z axis by geared motor.



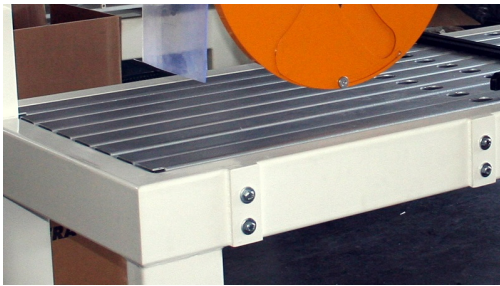
BRIDGE TILT

Manual bridge tilt for cutting from 90 to 45 degrees.



HEAD MOTION

Motorized head feed with variable speed in both directions.



WORKTABLE

Worktable made of galvanized steel rails.



EXTENSIONS AND SIDE STOP INCLUDED

The worktable is equipped with no. 6 worktable extensions and side stop for easily move also big slabs.

Advantages

TFR-A is a sturdy and compact bridge saw ideal for cutting large stone slabs:

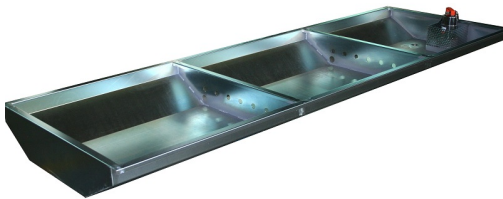
- **Customizable** according to customer requirements;
- Maximum cutting precision guaranteed by a **special beam design**;
- Suitable for **ceramic** and **sintered material** slabs;
- **Massive frame** for processing large stone slabs;
- **Motorized head feed** with variable speed in both directions;
- Also available with **manual head feed** (TFR-C).

Technical details

	TFR-A	TFR-A HT
Useful cut	3300 mm	3300 mm
Diamond blade diameter	250-300-350 mm	400-450-500 mm

Blade bore size	25.4 mm	25.4 mm
Motor power	5kW = 7HP (3ph.)	4kW = 5.5HP (3ph.)
Main motor rotation speed	2800 rpm a 50Hz – 3400 rpm a 60Hz	1400 rpm a 50Hz – 1700 rpm a 60Hz
Standard voltage/frequency	400V-50/60Hz /230V-60Hz 3ph.	400V-50/60Hz /230V-60Hz 3ph.

Accessories



WATER TANK

Water tank with built in recycling pump for disc cooling during processing.



CONTROL PLC

PLC control unit for step-cut programming.



WORKTABLE WITH POP-UP ROLLERS

Pop-up rollers manual or motorized to facilitate slab loading and positioning: roller table with omni-directional rollers.



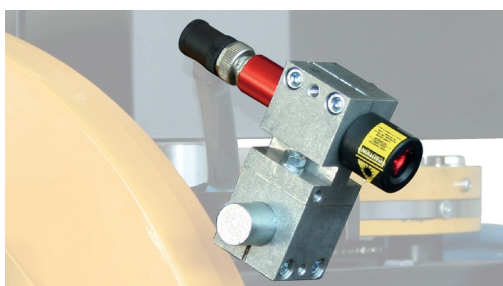
DEVICE FOR PARALLEL CUTS

Machine can be equipped with a special device that, controlling the movement of the side stop, facilitates the execution of parallel cuts. The side stop runs parallel to the cutting line by means of a special hand wheel.



VARIABLE SPEED

Blade variable speed to adjust the speed of the disc depending on the worked material.



LASER

Laser alignment device mounted on the head shows the blade's cutting line.



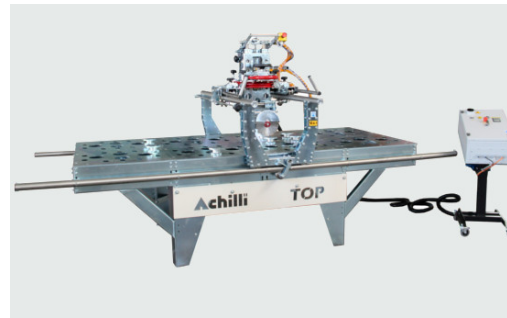
SIDE EXTENSION TABLES WITH ROLLERS

Side extension tables equipped with rollers to facilitate slab movement. Dimensions: 1510x865 mm

Related products



Monoblock bridge saw GOLD



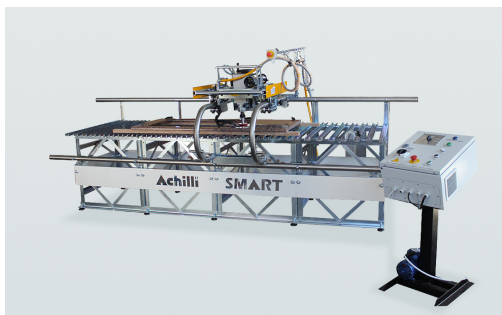
TOP manual working center



Motorized bench saw AFR-A



ADR XL saw for blocks



SMART multipurpose machine



Monoblock bridge saw MBS TS

Achilli tailor made

Elit ea duis sunt do esse cillum dolore ipsum ut est eu quis ipsum. Consectetur enim deserunt elit in exercitation ipsum sunt veniam eu commodo cupidatat. Id nostrud esse eu eiusmod sunt ipsum ipsum in adipisicing adipisicing deserunt.

**TAILORED ACHILLI MACHINES
CONTACT US FOR DETAILS**

REQUEST CUSTOMIZATION

Always at your disposal. Contact us.

Do you need information about Achilli products? Contact us for technical or commercial information on floor grinders, bench saws and bridge saws.

 +39 0541 387066

 +39 0541 389058

 info@achilli.com

REQUEST INFORMATION

I nostri canali social

Elit ea duis sunt do esse cillum dolore ipsum ut est eu quis ipsum. Consectetur enim deserunt elit in exercitation ipsum sunt veniam eu commodo cupidatat. Id nostrud esse eu eiusmod sunt ipsum ipsum in adipisicing adipisicing deserunt

 Facebook

 LinkedIn

 Youtube