

## STONE SAWS

# Miter saw for 45 degree cutting MSA

Miter saw for the professional tilted cutting at 45 degrees

Professional stone saw for **tilted cuts** designed to work slabs "face down", it allows to perform **perfect 45 degree cutting** even on **uncalibrated slabs**. No width limitation of the slab to process; even the most narrow strips can be machined thanks to the special pneumatic pistons blocking the stone. The **maximum cutting precision** is guaranteed by the head travel on linear guides fitted with recirculating ball slides and by the position of the blade **cutting from bottom upwards**.

## Miter saw for 45 degree cutting MSA

Miter saw for the professional tilted cutting at 45 degrees



## Features



### STRUCTURE

Steel frame sandblasted and ceramic coated (hot-dip galvanized upon request).



### SLAB BLOCKING

10 pneumatic pistons and 3 plates to secure also small workpieces in place during machining.



### WORKTABLE

Work table made of scratchproof plastic material strips.



### HEAD FEED

Motorized head travel with variable speed on linear guides fitted with recirculating ball slides automatically lubricated.

## Advantages

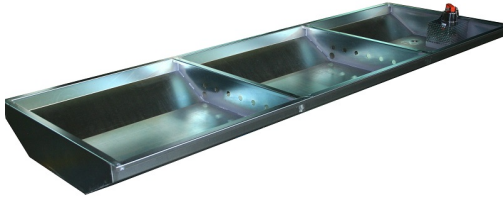
MSA professional miter saw for tilted cuts:

- Steel frame with hot-dip galvanizing treatment for maximum resistance to wear and rust;
- Worktable made of anti-scratch plastic material slats;
- Available in two models: useful cut 3300mm or 3700mm;
- Maximum cutting precision is guaranteed by the head travelling on linear guides fitted with recirculating ball slides automatically lubricated;
- 10 pneumatic pistons and 3 slab stops to secure even the smallest workpieces in place during machining;
- Pneumatic pop-up slab stops to cut thin ceramic and sintered material slabs.

## Technical details

X axis travel	3300 / 3700 mm
Worktable dimensions	3300/3700 x 1000 mm
Diamond blade diameter	350-400-450 mm
Blade bore size	50 mm
Min/Max stone thickness	0-80 mm (with pneumatic slab stops)
Main motor power	5,5kW = 7,5HP trifase
Main motor rotation speed	1400 rpm (50Hz) - 1700 rpm (60Hz)
Main motor rotation speed (opt.)	800 – 3400 rpm
Standard voltage/ frequency	3ph. 400V-50/60Hz 230V-60Hz

## Accessories



#### WATER TANK

Water tank with built in recycling pump for disc cooling during processing.



#### VARIABLE SPEED

Blade variable speed to adjust the speed of the disc depending on the worked material.



#### POP-UP ROLLERS

Hydraulic pop-up rollers to facilitate slab loading and positioning:

- Roller table with omni-directional rollers;
- Pop up rollers raise and lower by hydraulic pump.



#### SIDE EXTENSION TABLES WITH ROLLERS

Side extension tables equipped with rollers to facilitate slab movement. Dimensions: 1510x865 mm

## Related products



SMART multipurpose machine



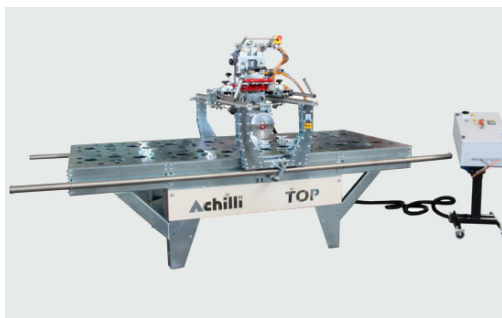
Revolving saw ARS



Mini bridge saw TFM



Monoblock bridge GLD TSB



TOP manual working center



Monoblock bridge saw GOLD

## Achilli tailor made

Elit ea duis sunt do esse cillum dolore ipsum ut est eu quis ipsum. Consectetur enim deserunt elit in exercitation ipsum sunt veniam eu commodo cupidatat. Id nostrud esse eu eiusmod sunt ipsum ipsum in adipisicing adipisicing deserunt.

**TAILORED ACHILLI MACHINES  
CONTACT US FOR DETAILS**

**REQUEST CUSTOMIZATION**

## Always at your disposal. Contact us.

Do you need information about Achilli products? Contact us for technical or commercial information on floor grinders, bench saws and bridge saws.

 +39 0541 387066

 +39 0541 389058

 [info@achilli.com](mailto:info@achilli.com)

**REQUEST INFORMATION**

## I nostri canali social

Elit ea duis sunt do esse cillum dolore ipsum ut est eu quis ipsum. Consectetur enim deserunt elit in exercitation ipsum sunt veniam eu commodo cupidatat. Id nostrud esse eu eiusmod sunt ipsum ipsum in adipisicing adipisicing deserunt

 Facebook

 LinkedIn

 Youtube